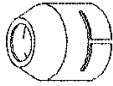


HOTWIND S ACCESSORIES



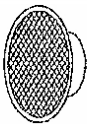
Round nozzle for HOTWIND S
107.245: Round nozzle \varnothing 40 mm, push-fit



Flange connector for HOTWIND S
107.246: Flange connector, push-fit on protection tube



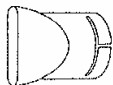
Extension nozzle for HOTWIND S
107.247: Extension nozzle 200 x 40 mm, push-fit



Stainless steel filter for HOTWIND S
107.248: Stainless steel filter, push-fit, can be cleaned, for continuous operation



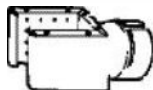
Wide slot nozzle for HOTWIND S
107.259: Wide slot nozzle 150 x 12, push-fit



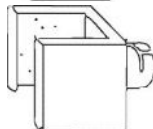
Wide slot nozzle for HOTWIND S
107.260: Wide slot nozzle 85 x 15 mm, push-fit



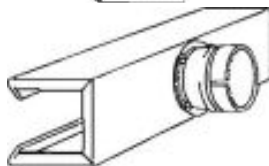
Wide slot nozzle for HOTWIND S
107.262: Wide slot nozzle 300 x 4 mm, push-fit



Sieve reflector for HOTWIND S
107.329: Sieve reflector \varnothing 75 mm, push-fit



Sieve reflector for HOTWIND S
107.336: Sieve reflector \varnothing 110 mm, push-fit



Shell reflector for HOTWIND S
107.342: Shell reflector 400 x 50 mm, push-fit