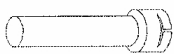
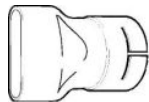
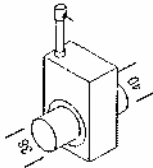
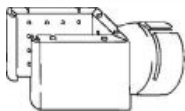
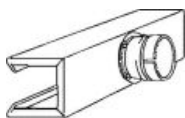


LHS 40L ACCESSORIES:**Flange connection push-fit for LHS 40L
107.254****Extension nozzle Extension nozzle 36.5 x 160 mm, push-fit for
LHS 40L, 107.255****Angled nozzle \varnothing 50 for LHS 40L
107.256: Angled nozzle \varnothing 50 mm shank length 160 x 100 mm,
push-fit****Tubular nozzle for LHS 40L
107.257: Tubular nozzle, length 600 mm Length of air outlet slot
420 mm, push-fit****Wide slot nozzle 70 x 10 mm push-fit on ELECTRON, LHS 40L
107.258: Wide slot nozzle 70 x 10 mm, push-fit****Wide slot nozzle 150 x 12 mm push-fit on ELECTRON, LHS
40L
107.270: Wide slot nozzle 150 x 12 mm, push-fit****Air flow off/on switch for LHS 40L
107.299: Air flow off/on switch The air flow is interrupted on
command (pneumatic 5 bar) to the heaters Size 214 x 88 x 133****Sieve reflector 85 x 85 mm push-fit on LHS 40L
107.327: Sieve reflector 85 x 85 mm, push-fit****Folding reflector 125 x 22mm push-fit on LHS 40L
107.330: Folding reflector 125 x 22 mm, push-fit****Folding reflector 72 x 70 mm push-fit on LHS 40L
107.331: Folding reflector 72 x 70 mm, push-fit****Shell reflector 45 x 250 mm push-fit on LHS 40L
107.340: Shell reflector 45 x 250 mm, push-fit**