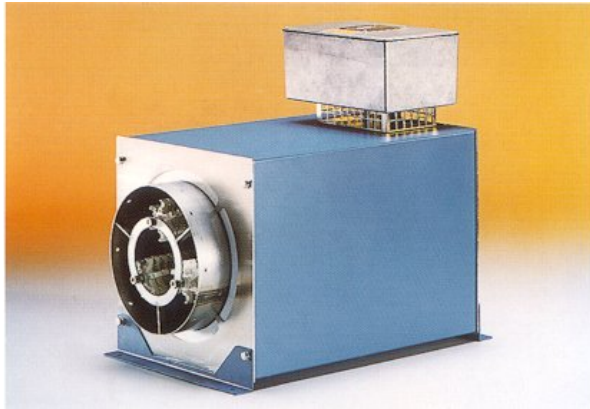


648 Hot Air Heater



Ideal for heating larger volumes of air to 300°C for process heat and heated air knife applications. This hot air heater has been designed for budget & space conscious applications to provide years of trouble free service.

Benefits

- Stainless steel lining, insulated jacket
- Compact, rugged design
- Flanged inlet
- Maximum outlet air temperature 300°C
- Can accommodate inlet air temperature of 250°C
- 150°C at 500 CFM
- Wattage from 6 kW, 12 kW & 36 kW
- Can be mounted in most positions
- Built in thermal cutoff switch
- Adaptable to our full range of temperature control systems
- Inlet air regulating valve available
- Custom voltage configurations available

Why Buy From US

The 648 heater only available in Canada from STANMECH and its distributor network. The 648 heater is ideal for providing larger volumes of heated air.

Technical Data – 648 Hot Air Heater

Voltage	V	230, 380, 415
Watts	kW	6, 12, 36
Hertz	Hz	60
Length	mm	417
Diameter	mm	198
Maximum Temp. Outlet	°C	300
Air Flow Resistance	3.5" w.g. @ 800 CFM	