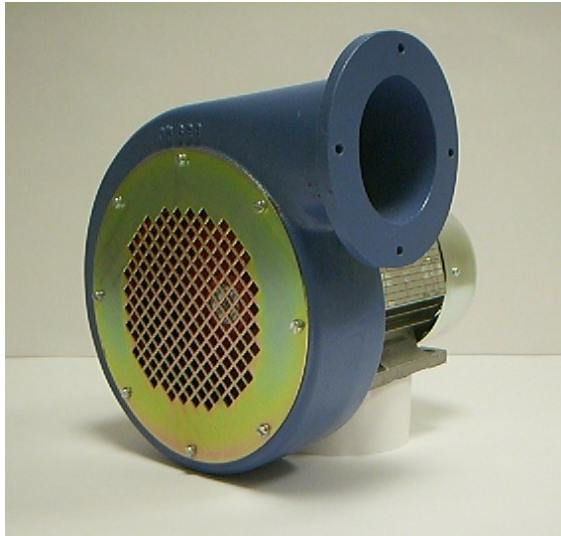


574 Direct Drive Blower



The 574 direct drive centrifugal blower is ideal for air knife drying, vacuum, fluidized bed and aeration applications. This blower has been designed for use with our inline air knife heaters.

Benefits

- Compact, rugged design
- Heavy duty, high quality construction
- High speed, high flow rate
- Efficient power utilization
- Direct drive motor technology
- 2.75" water gauge @ 150 CFM
- Complete with 1 year warranty
- Available with a recirculating air option
– up to 300°C inlet air temperature

Why Buy From US

The 574 blower is only available in Canada from STANMECH and its distributor network. The 574 blower is ideal for those applications requiring an efficient, cost effective high flow rate air source.

Technical Data – 574 Centrifugal Blower

Voltage	V	230-400
Hertz	Hz	50/60
Power	kW	0.18
Amperes	A	1.0
Weight	kg	9
Inlet	Inch	7.5
Outlet	Inch	4
Noise Level	dB	65

Call us for complete blower specifications